

MARMO

SHAPING FUTURE OF ITALIAN DESIGN

INSTALLATION AND MAINTANCE HYDRONIC MANUAL



INDICE

1. GENERAL INFORMATION	3
1.1 Product information	3
1.2 Safety Information	4
1.3 Datasheet.....	5
2. EQUIPMENT	6
2.1 Accessories provided with the decorative radiator	6
2.2 Valve kit for connection to the water inlet and outlet pipes	7
2.2 A Contents of Monoblock Kit	7
2.2 B Contents of Valve Kit Holders	7
2.3 Equipment needed.....	8
2.5 Installation procedure	8
2.6 Special notes for bathroom installation	9
2.7 Measurements and footprint	9
3. INSTALLATION.....	13
3.1 STEP 1: Installation of the decorative radiator	13
3.2 STEP 2: Installation of the Monoblock/Thermostatic valves.....	14
3.3 STEP 3: Installation on the wall	16
4. WARRANTY AND ASSISTANCE.....	18
5. TECHNICAL ASSISTANCE.....	18

Maarmo reserves the right to modify the manual at any time with the aim of making the information clearer, to add or remove any part without having to inform customers in an obvious manner

The installation manual can also be consulted at <https://www.maarmo.it/download/>.

1. GENERAL INFORMATION

1.1 Product information



Dear Customer:

Thank you for your preference.

Before installing your MAARMO decorative radiator, please read this manual carefully. It contains general information about the product, the correct installation method, safety instructions and the warranty.

Maarmo decorative radiators represent a new patented and entirely eco-sustainable technology capable of transmitting heat by radiation to all rooms. The production process respects and pays attention to environmental sustainability by reusing marble processing waste. The waste marble powder is agglomerated with water, special binders and thickeners researched and produced by our craftsmen.

Our mission is to take care of people by spreading warmth and wellbeing in the environments in which they live, with the creativity and commitment that has always distinguished Made in Italy products.

Comfort and quality of life are the goal of our passion and research for continuous innovation, aimed at using recycled materials with new and technological production processes where architectural design and respect for the environment are inseparable values.

We believe that only a sustainable, responsible vision and conduct will allow us to preserve future generations.

This is what we believe in at Maarmo and this is what we work towards every day, creating innovative and sustainable products.





1.2 Safety Information

- For the installation of the MAARMO heating unit it is recommended to contact a qualified professional
- Before installing the decorative radiator check the condition of the support
- Choose suitable screws for the existing support.
- During the installation pay attention to water pipes and electrical cables
- The panel must be switched off during installation, maintenance and cleaning.
- Do not clean with chemicals or alcohol
- Cleaning must be carried out by adults who are familiar with the product and its operation.
- The panel is intended to heat rooms, any other use is prohibited.
- To avoid overheating, do not cover the panel.
- The panel can reach very hot temperatures, so be particularly careful if children and vulnerable people are present.
- Do not use the heating unit if it is visually damaged and contact the service centre.
- The decorative radiator must not be installed behind curtains

PLEASE TAKE NOTE



SAFETY PRECAUTIONS

Your radiator is a fragile and heavy item, please handle with care.

Please ensure you thoroughly read the instructions before mounting to ensure safety, protection and maximum strength. Should your radiator be installed on plasterboard walls, heavy duty fixings are those that can take a large amount of weight and must be used to guarantee maximum safety.

It is the responsibility of the purchaser and/or installer to verify that the mounting surface is solid and capable of supporting the weight of the radiator. It is recommended to consult with a professional and determine the appropriate fastener/anchor needed for the mounting surface.

1.3 Datasheet

Model	MAW0311	MAW0318	MAW0511	MAW0515	MAW0518	MAW0508
Nominal Power	300 W	480 W	720 W	900 W	1200 W	480 W
Enclosure Degree	IPX4					
Dimensions L*H*P Vertical Installation	300x1100x70	300x1800x70	550x1100x70	550x1500x70	550x1800x70	550x860x70
Weight	19 kg	34 kg	36 kg	48 kg	58 kg	27 kg
MODELS						
PERFETTO	MAW0311PER	MAW0318PER	MAW0511PER	MAW0515PER	MAW0518PER	MAW0508PER
TOSCANA	MAW0311TOS	MAW0318TOS	MAW0511TOS	MAW0515TOS	MAW0518TOS	MAW0508TOS
TESSUTO	MAW0311TEE	MAW0318TEE	MAW0511TEE	MAW0515TEE	MAW0518TEE	MAW0508TEE
GINKO	MAW0311GNK	MAW0318GNK	MAW0511GNK	MAW0515GNK	MAW0518GNK	MAW0508GNK
CURVE	MAW0311CRV	MAW0318CRV	MAW0511CRV	MAW0515CRV	MAW0518CRV	MAW0508CRV
FIXING DIST. VERT. DxH	140x1010	140x1710	380x745	380x990	380x1370	380x1710
FIXING DIST. HORIZ DxH	1010x140	1710x140	340x500	550x500	850x500	1710x380
Using Temp.	0 – 35°C					
Storage Temperature	-10° – +40°C					
Humidity	0 – 85% without condensation					
Temperature setting Range	7 – 30°C					

2. EQUIPMENT

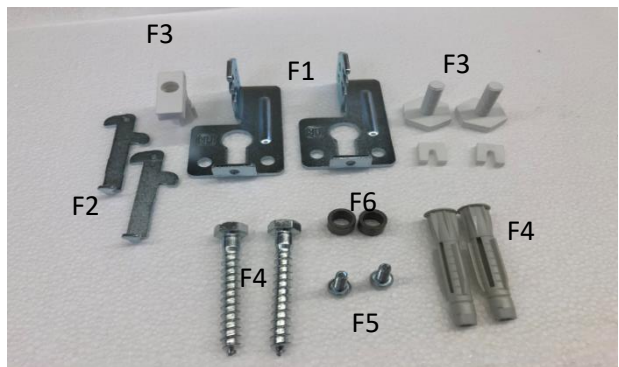
2.1 Accessories provided with the decorative radiator

The following items are supplied with each MAARMO hydronic radiator:

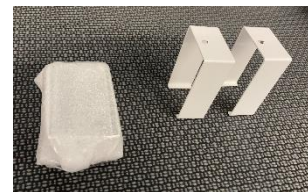
- n.2 hangers, metal elements of various shapes that allow them to be hung from hooks embedded in the wall (F1);
- n.2 anti-hooking safety lock (F2)
- n.2 spacer feet (F3)
- n.2 screws and dowels (F4)
- n.2 retaining screws (F5)
- n.2 spacer (F6)
- n.2 . cover hangers (Carter)



Packaged accessories bag



Accessories bag content

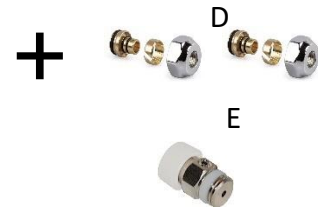


Cover hangers

2.2 Valve kit for connection to the water inlet and outlet pipes (not provided as standard, to be ordered separately, based on the location needs of the radiator and the positioning and measurement of the diameter of the water inlet and outlet pipes)

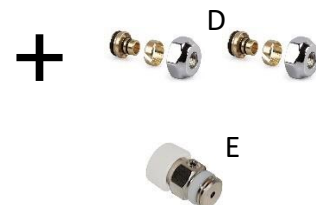
2.2 A Contents of **Monoblock Kit**

- Flexible pipes (A)
- Monoblock (B)
- Fittings (C)
- Adapters (D)
- Venting valve (E)



2.2 B Contents of **Valve Kit Holders:**

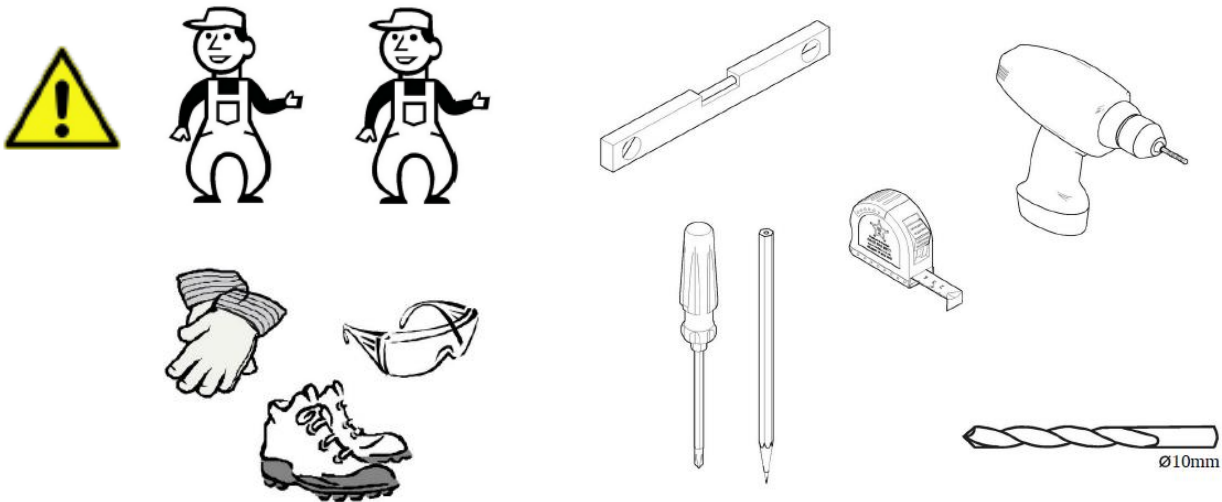
- Flexible pipes (A)
- Inlet and outlet valves (B)
- Fittings (C)
- Adapters (D)
- Venting valve (E)



2.3 Equipment needed

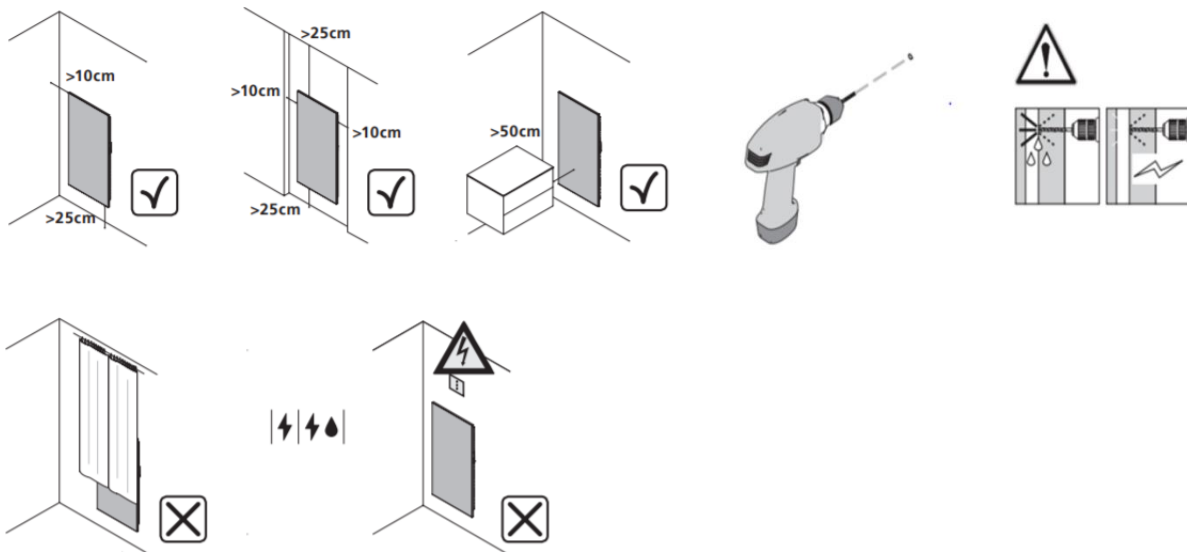
The following equipment is required for the installation of the MAARMO heating unit:

- Gloves, safety shoes and glasses;
- Drill - 10 mm drill bit, tape measure, spirit level, screwdriver, pencil/pen.

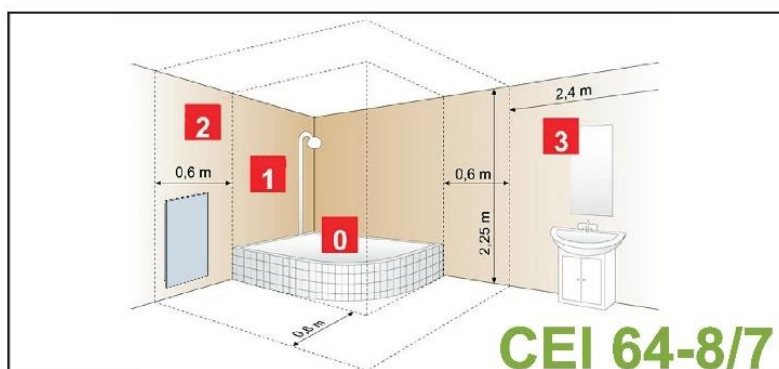


2.5 Installation procedure

- Before installation, check the correct position of the radiator in the room in relation to other elements of furniture (e.g., curtains, drawer units) and in relation to the perimeter walls.
- The supplied anchor kit must only be used on concrete, solid brick, perforated brick, compact stone; always check that the support is suitable for the weight, and if necessary, replace the supplied plug with a model suitable for the support used



2.6 Special notes for bathroom installation

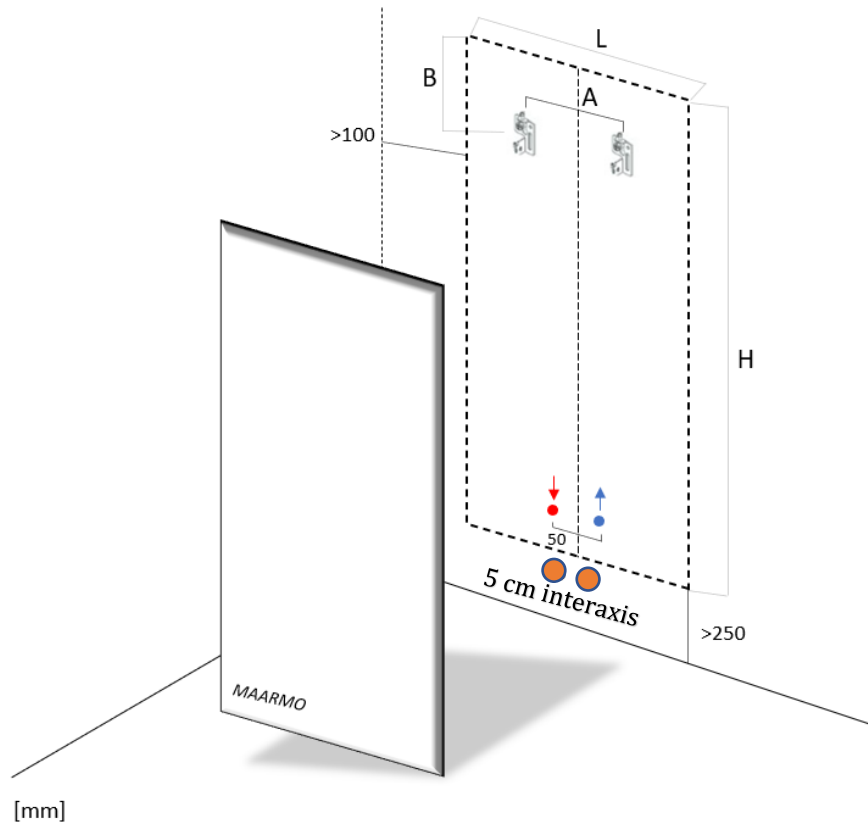


The installation must comply with the laws and regulations of the country in which it is installed.

The device can be installed in zone 2 and 3, but CANNOT be installed in zone 0 and 1 in reference to CEI 64-8/7 art. 701.32. so that the device cannot be reached by someone using the shower or bathtub.

2.7 Measurements and footprint

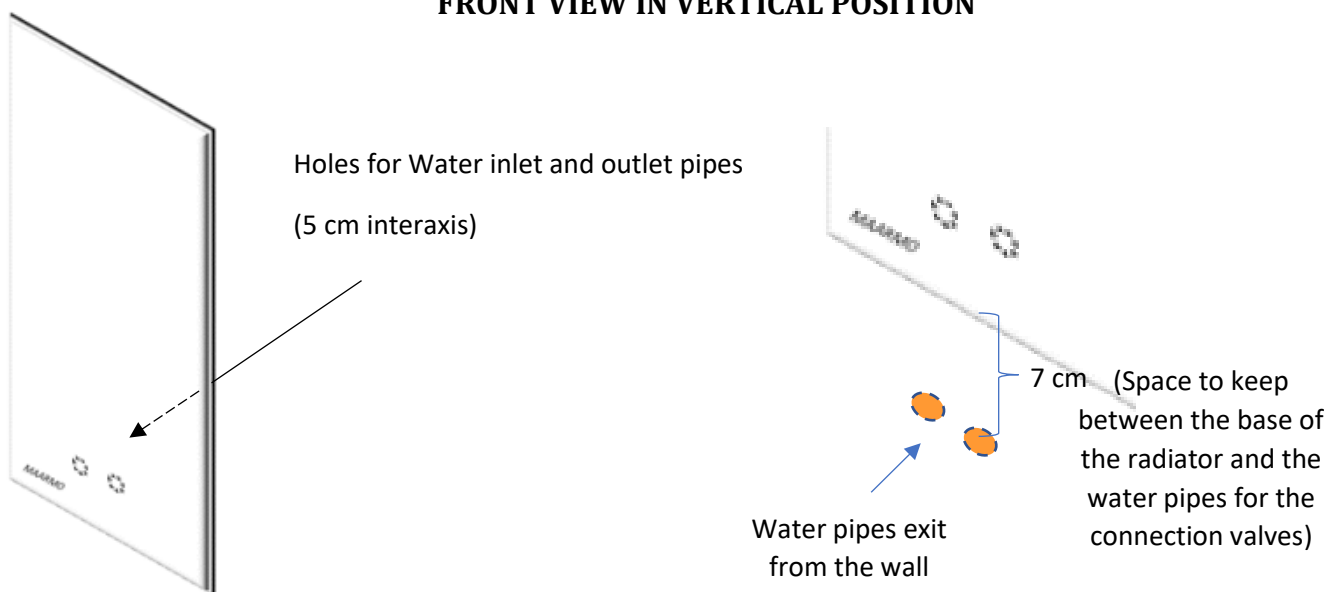
Misura mm	VERTICALE		ORIZZONTALE	
	A	B	A	B
550 X 860	380	105	340	45
550 X 1100	380	105	550	45
550 X 1500	380	105	850	45
550 X 1800	380	105	1030	45
300 X 1100	140	85	580	65
300 X 1800	140	85	1300	65
400 X 1600	204	105	850	55
600 X 1100	380	105	550	55



The hydronic version of the MAARMO heater can be positioned either horizontally or vertically.

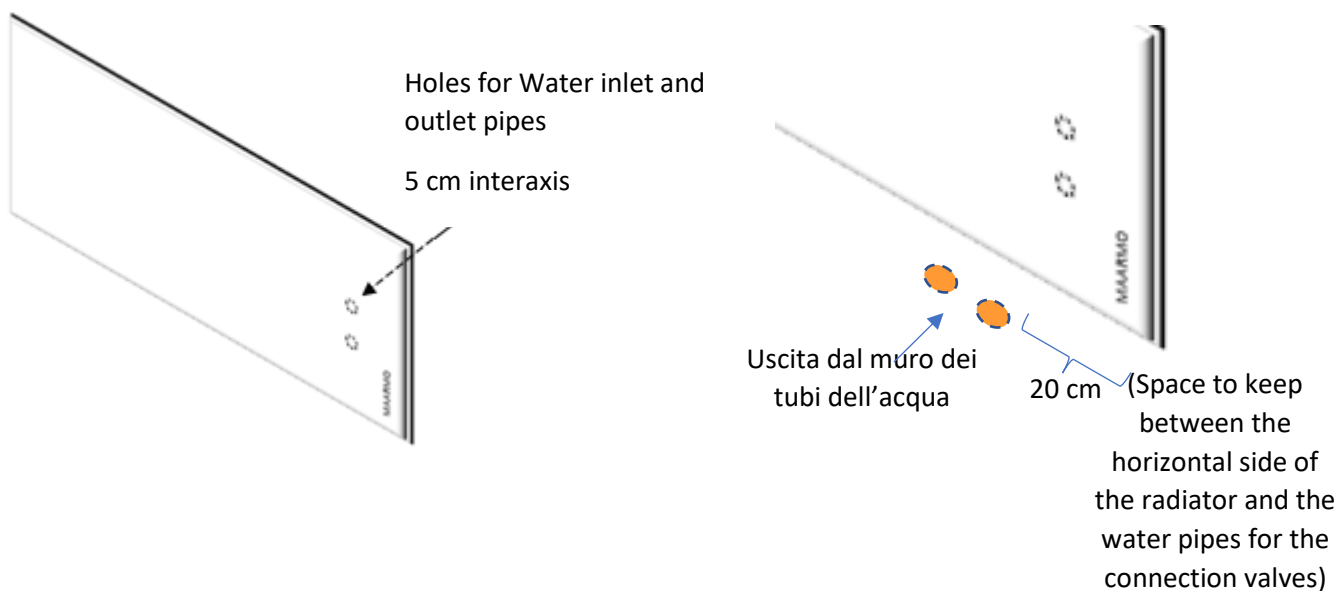
For the correct installation of the MAARMO heater in a vertical position, make sure that the MAARMO logo is located at the bottom left as shown in the picture and that the flow and return holes (located at the back) are on the bottom of the heater.

FRONT VIEW IN VERTICAL POSITION

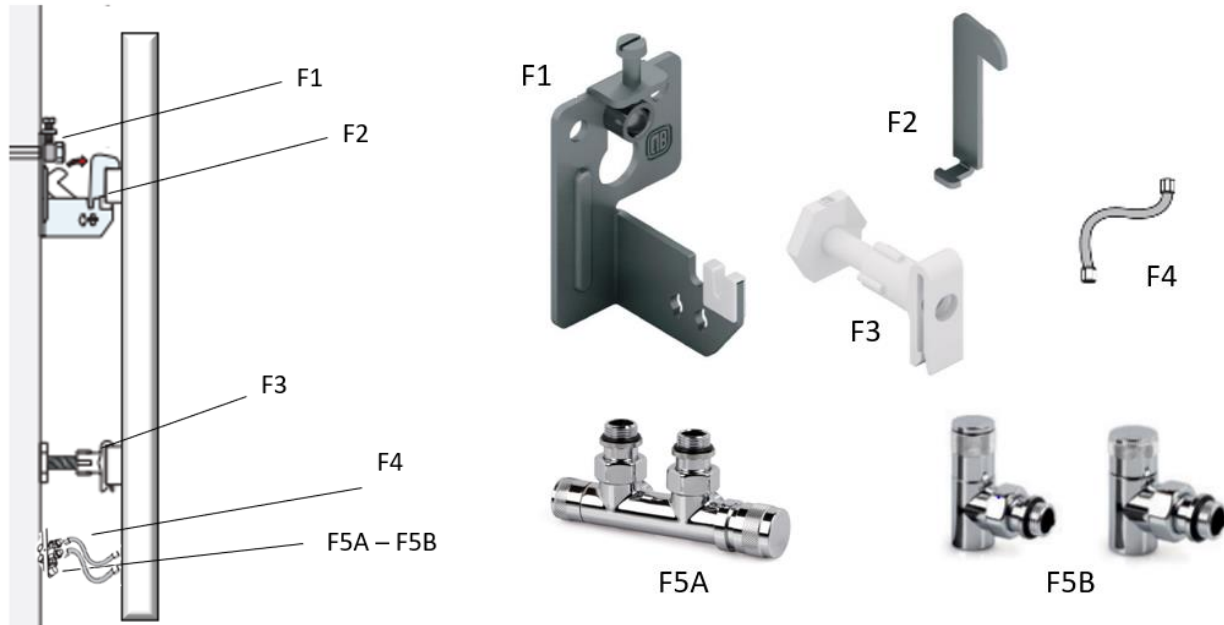


For the correct installation of the MAARMO heater in a horizontal position, make sure that the MAARMO logo is located at the bottom right as shown in the picture and that the supply and return holes (located at the back) are on the right side of the heater.

FRONT VIEW IN ORIZONTAL POSITION



Side view of the radiator



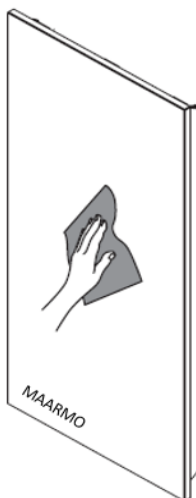
F1= Hangers

F2= Anti-hook safety lock

F3= Spacer feet

F4= Flexible pipes

F5A= Monoblock - F5B= Thermostatic valves





As required by current regulations, the safety lock against hooking must be inserted after installation.

3. INSTALLATION

3.1 STEP 1: Installation of the decorative radiator

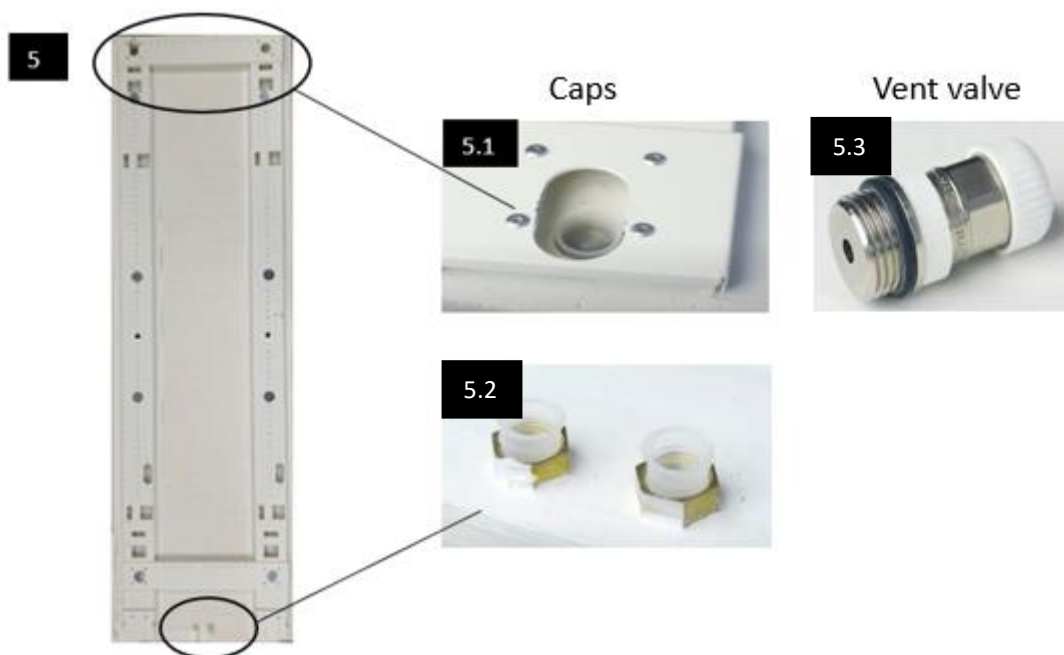
- Take measurements with a tape measure, respecting the safety distances between the radiator and the other elements of the wall (picture 1 and 2)
- Using a drill (10 mm bit), drill a hole in the surface designated for the installation of the radiator (picture 3);
- Insert the dowel (F4) into the hole, place the hangers (F1) in the proximity of the holes and secure with a screw after inserting the spacer (F6) (picture 4 and 5).



3.2 STEP 2: Installation of the Monoblock/Thermostatic valves

(Preparation of valves and pipes for connection to the heating plumbing system)

- Insert the adapters in order as shown in the picture (picture 1 and 2);
- Ensure that the Monoblock/valves are securely attached to the fittings using a spanner (picture 3 and 4);
- Remove the caps protecting the flow and return outlets at the base of the heater (5.1 and 5.2);
- Screw the venting valve at the top of the radiator (5.3);
- Wrap a gasket tape (we recommend Teflon) around the threads of the pipes and adapters to ensure a better seal and screw them into the appropriate holes (as sequence of images 6/7/8/9/10/11).





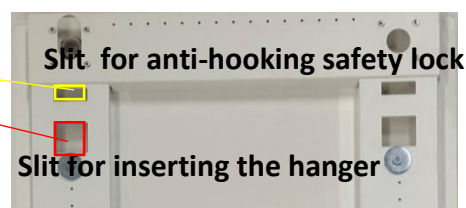
Final version Monoblock kit



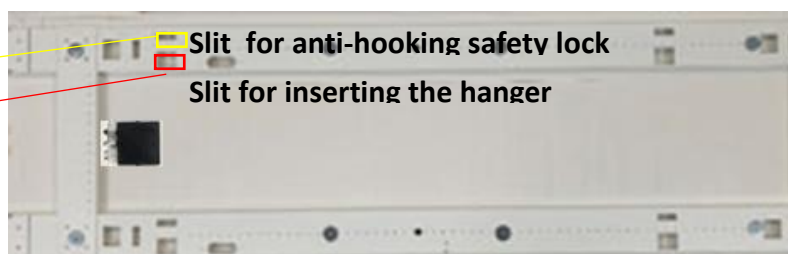
Final version Valve kit

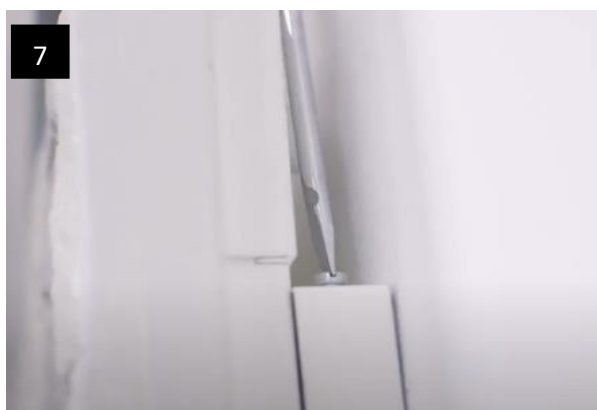
3.3 STEP 3: Installation on the wall

- place the anti-hooking safety lock (picture 1)
- hang the radiator on the wall bracket (picture 2/3/4)
- insert the anti-hooking safety lock tooth into the hole in the metal structure (picture 5)
- insert the retaining screw into the hole of the cover hanger (picture 6)
- Screw the retaining screw to the hanger and change the inclination by screwing/unscrewing the retaining screw (picture 7)
- Check that it is at the correct inclination using a spirit level (picture 8).
- Connect the pipes, mounted in the previous step, to the Monoblock or to the two valves; to do this it is advisable to lift the lower part of the radiator (picture 9).



(horizontal mounting)







The hydraulic circuit, correctly vented, must always be connected to the heating system with at least 1 valve open. The radiator is equipped with a safety valve which is activated in the event of overpressure. If this valve is activated, you may notice drops of water on the floor below, indicating that both valves connecting the heating plumbing to the radiator are closed. This can be rectified by opening the valves connecting the system.

Ensure that the vent at the top is open and then refill the hydraulic circuit by opening the system valves.

4. WARRANTY AND ASSISTANCE

The MAARMO decorative radiator warranty is valid if the product remains intact, without any modification or tampering.

Our warranty period is 24 months on the operation of the goods manufactured and/or supplied and a further 36 months on the heating body only (painting, integrity of the heating body, etc. excluding electrical parts and electronic control systems), starting from the date of shipment ex works (the date on the delivery note or accompanying invoice shall be taken as proof).

The warranty is strictly limited to the reimbursement or replacement, as we deem appropriate, of parts acknowledged to be defective after the products are returned in their original packaging to our factory at the purchaser's expense. Repair work on the products will be carried out exclusively at our factory.

The guarantee only covers non-wearing parts of our products. Wear parts (e.g. thermostat batteries) and their transport costs are not included.

No further compensation of any kind is due to the purchaser for direct / indirect damage suffered by the purchaser due to product defects.

The costs of disassembly and reassembly of the products, necessary to eliminate defects, are borne by the buyer if the products are out of warranty.

The guarantee is only valid if the products are used in a suitable environment and in an application that has been foreseen and included in the design of the products. Any improper use of the products is prohibited and will void the warranty.

Any variation of the above terms must be agreed in writing with MAARMO SRL.

The terms of the warranty are void if the product has been tampered with, damaged or is not in the state in which it was delivered.



In order for the warranty to be valid, installation must be carried out in accordance with the laws and regulations in force in the country.

5. TECHNICAL ASSISTANCE

For technical assistance, contact your installer or distributor.